



Products specification

- ◆ L6E load cells are available in the capacities 50kg to 300kg.
- ◆ Aluminium construction with parallel beam.
- ◆ Silicon adhesive sealed, surface anodized and anti-corrosion.
- ◆ Integral structure and easy installation.
- ◆ Suitable for pricing scales, platform scales and other electronic weighing devices.

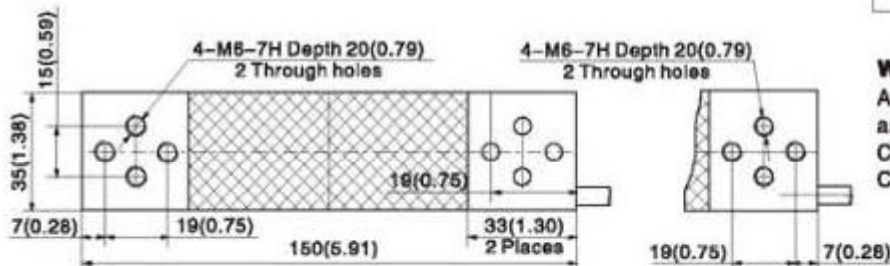
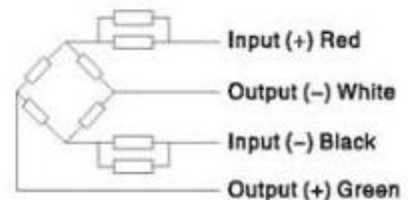
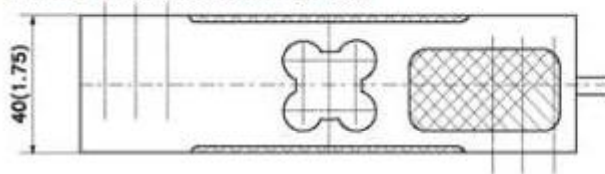
Features

- ◆ Capacity: 50kg to 300kg .
- ◆ High accuracy.
- ◆ Max. platform size: 400x400mm.
- ◆ With OIML approval.

Specifications

Capacity	(kg)	50/60/80/100/150/200/300		
Accuracy		C3D	C3	C3G
Approvals			OIML R60 C3	
Maximum number of verification intervals	n max	2500	3000	4000
Minimum load cell verification interval	v min	E _{max} /5000	E _{max} /7000	E _{max} /11000
Combined error	(%FS)	≤±0.030	≤±0.020	≤±0.015
Creep	(%FS/30min)	≤±0.020	≤±0.0167	≤±0.0125
Temperature effect on sensitivity	(%FS/10°C)	≤±0.021	≤±0.0175	≤±0.0131
Temperature effect on zero	(%FS/10°C)	≤±0.028	≤±0.020	≤±0.0127
Output sensitivity	(mv/v)		2.0±0.2	
Input resistance	(Ω)		406±6	
Output resistance	(Ω)		350±3	
Insulation resistance	(MΩ)		≥5000(50VDC)	
Zero balance	(%FS)		2	
Temperature, compensated	(°C)		-10~+40	
Temperature, operating	(°C)		-35~+65	
Excitation, Recommended	(V)		5~12(DC)	
Excitation, Max	(V)		18(DC)	
Safe overload	(%FS)		150	
Ultimate overload	(%FS)		300	
Corner correction			0.02% load value/100mm	

Outline Dimension mm(inch)



Wiring:

Adopt a shielded, 4 conductor cable, and cable jacket is PVC.

Cable length: 2 ± 0.1m

Cable diameter: 5.3 ± 0.2mm