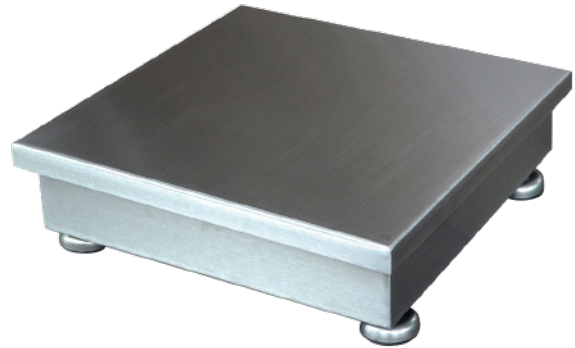




SPECIFICATIONS

Material	SUS304 S.S. Optional SUS316 S.S.
Capacity	6/15/30/60/100 kg
Division	1/3,000(approved)--1/15,000
Load Cell	M14/M14i/M17P
Load Cell Approval	OIML/NTEP
Load Cell Protection	IP65/IP67/IP68&IP69K
Platform Size	300x300mm 400x400mm



MODELS

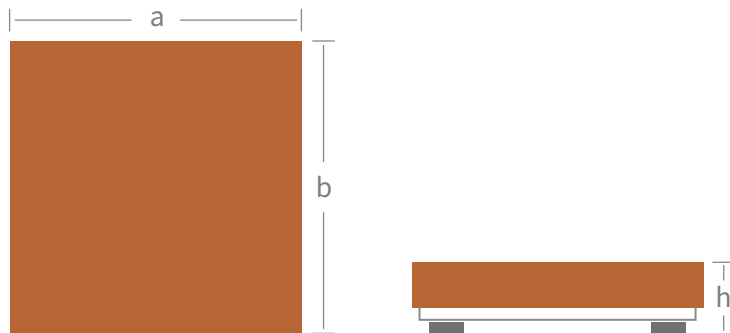
Model	Part No.	Size	Capacity	L.C.Cert	L.C.IP
BHB3006L	620125	300x300mm	6kg	OIML NTEP	IP65
BHB3015L	620126	300x300mm	15kg		
BHB3030L	620127	300x300mm	30kg		
BHB4015L	620128	400x400mm	15kg		
BHB4030L	620129	400x400mm	30kg		
BHB4060L	620130	400x400mm	60kg		
BHB4100L	620131	400x400mm	100kg		
BHB3006	620132	300x300mm	6kg	OIML	IP67
BHB3015	620133	300x300mm	15kg		
BHB3030	620134	300x300mm	6kg		
BHB4015	620135	400x400mm	15kg		
BHB4030	620136	400x400mm	30kg		
BHB4060	620137	400x400mm	60kg		
BHB4100	620138	400x400mm	100kg		
BHB3006K	620139	300x300mm	6kg	OIML	IP68&IP69K
BHB3015K	620140	300x300mm	15kg		
BHB3030K	620141	300x300mm	30kg		
BHB4015K	620142	400x400mm	15kg		
BHB4030K	620143	400x400mm	30kg		
BHB4060K	620144	400x400mm	60kg		
BHB4100K	620145	400x400mm	100kg		

FEATURES

- Capacity up to 100kg
- Anti-impact with buffering springs
- Four anti-slip S.S. adjusting feet
- OIML/NTEP approved load cells
- Overload protection
- Polishing finish, natural S.S color

DIMENSION / mm

Model	a	b	h-min	h-max	pack size	G.W/kg	1PC/CTN
BHB3	300	300	115	125	460*360*200	7	1
BHB4	400	400	115	125	560*460*220	9	1



OPTIONAL

Accessories	Part No.	Details
BP10	109034	S.S. rectangular pole



BP10