



SPECIFICATIONS

Material	SUS304 S.S.
Capacity	6/15/30/60/150/300/600 kg
Division	1/3,000(approved)--1/15,000
Load Cell	M13M/M15M/M17M
Load Cell Approval	OIML/NTEP
Load Cell Protection	IP65 IP66 with shield
Platform Size	300x300mm 400x400mm 600x600mm 800x800mm



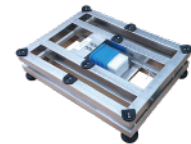
Plastic M*C Shield

MODELS

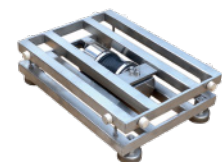
Model	Part No.	Size	Capacity	L.C.Cert
BSB3006	620113	300x300mm	6kg	OIML NTEP
BSB3015	620114	300x300mm	15kg	
BSB3030	620115	300x300mm	30kg	
BSB4030	620116	400x400mm	30kg	
BSB4060	620117	400x400mm	60kg	
BSB4150	620118	400x400mm	150kg	OIML
BSB6060	620119	600x600mm	60kg	
BSB6150	620120	600x600mm	150kg	
BSB6300	620121	600x600mm	300kg	
BSB8150	620122	800x800mm	150kg	
BSB8300	620123	800x800mm	300kg	
BSB8600	620124	800x800mm	600kg	



S.S M*SC Shield



M*C Shield



M*SC Shield

FEATURES

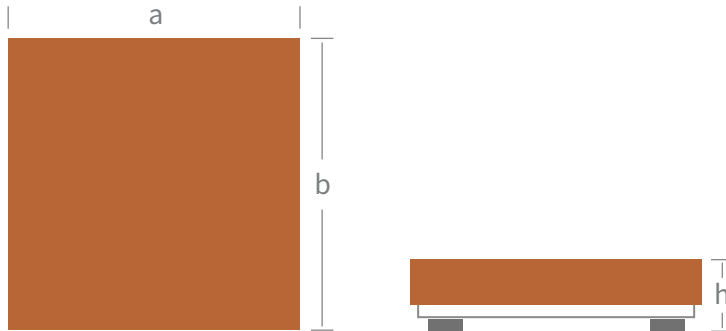
- Capacity up to 600kg
- Rubber supporters and four anti-slip adjusting feet
- OIML/NTEP approved load cells
- M*C or M*SC load cell shields
(Waterproof, insect-proof or anti-rodent)
- Overload protection
- Polishing finish, optional sand blasting process
- Provide customized platform size



800x800mm

DIMENSION / mm

Model	a	b	h-min	h-max	pack size	G.W/kg	1PC/CTN
BSB3	300	300	80	90	355*355*170	7	1
BSB4	400	400	130	145	600*530*170	11.5	1
BSB6	600	600	145	160	810*740*180	29	1
BSB8	800	800	190	200	1040*930*180	38	1



OPTIONAL

Accessories	Part No.	Details
ISB	109030	Steel base and S.S. pole stand (Diameter 38mm)
ISC	109023	S.S. base and pole stand (Diameter 38mm)
BP4	109031	S.S. base and pole (Diameter 38mm)
BP5	109032	S.S. rectangular pole
BP8	109033	S.S. base and pole (Diameter 38mm)
PFS	109027	S.S. protection rail
PFR	109028	S.S. protection rail
ROL	109029	ROL400/ROL500/ROL600/ROL800



ISB



ISC



BP8



BP5



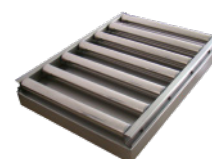
BP4



PFS



PFR



ROL