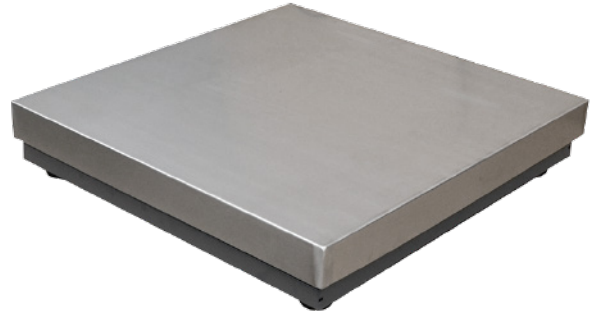




SPECIFICATIONS

Housing	Mild steel tube structure SUS304 S.S. cover
Capacity	6/15/30/60/150/300/600 kg
Division	1/3,000(approved)--1/15,000
Load Cell	M13M/M15M/M17M
Load Cell Approval	OIML/NTEP
Load Cell Protection	IP65
Platform Size	300x300mm 400x400mm 600x600mm 800x800mm



300x300mm

MODELS

Model	Part No.	Size	Capacity
BSW3006	620101	300x300mm	6kg
BSW3015	620102	300x300mm	15kg
BSW3030	620103	300x300mm	30kg
BSW4030	620104	400x400mm	30kg
BSW4060	620105	400x400mm	60kg
BSW4150	620106	400x400mm	150kg
BSW6060	620107	600x600mm	60kg
BSW6150	620108	600x600mm	150kg
BSW6300	620109	600x600mm	300kg
BSW8150	620110	800x800mm	150kg
BSW8300	620111	800x800mm	300kg
BSW8600	620112	800x800mm	600kg

L.C.Cert

OIML
NTEP



400x400mm

OIML



600x600mm

FEATURES

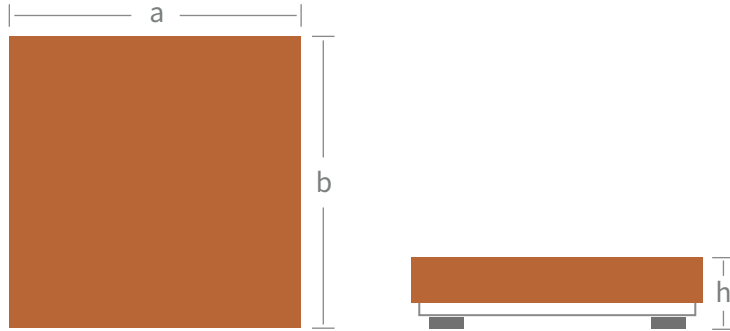
- Capacity up to 600kg
- Rubber supporters and four anti-slip adjusting feet
- OIML/NTEP approved load cells
- Overload protection
- Provide customized platform size



800x800mm

DIMENSION / mm

Model	a	b	h-min	h-max	pack size	G.W/kg	1PC/CTN
BSW3	300	300	75	85	355*355*170	7	1
BSW4	400	400	125	140	600*530*170	11.5	1
BSW6	600	600	140	155	810*740*180	29	1
BSW8	800	800	185	195	1040*930*180	38	1



OPTIONAL

Accessories	Part No.	Details
ISA	109022	Steel base and S.S. pole stand (Diameter 38mm)
ISC	109023	S.S. base and pole stand (Diameter 38mm)
BP1	109024	Steel base and S.S. pole (Diameter 38mm)
BP2	109025	Aluminum base and pole
BP7	109026	Aluminum base and rectangular pole
PFS	109027	S.S. protection rail
PFT	109028	Steel protection rail
ROL	109029	ROL400/ROL500/ROL600/ROL800



ISA



ISC



BP7



BP2



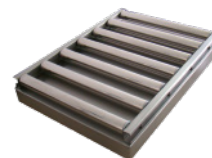
BP1



PFS



PFT



ROL