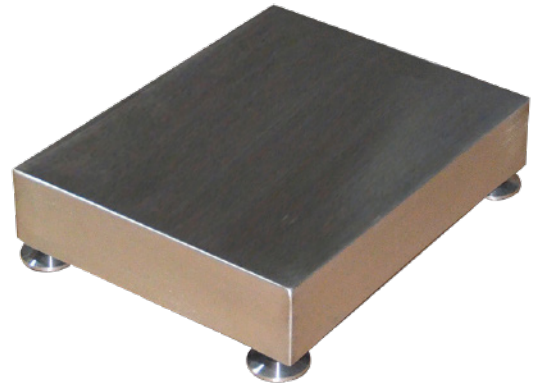




SPECIFICATIONS

Material	SUS304 S.S. SUS316 S.S.
Capacity	6/15/30/60/150/300 kg
Division	1/3,000(approved)--1/15,000
Load Cell	M13P/M17P
Load Cell Approval	CE/OIML/NTEP
Load Cell Protection	IP67/IP68&IP69K
Platform Size	300x300mm 400x400mm 600x600mm



MODELS

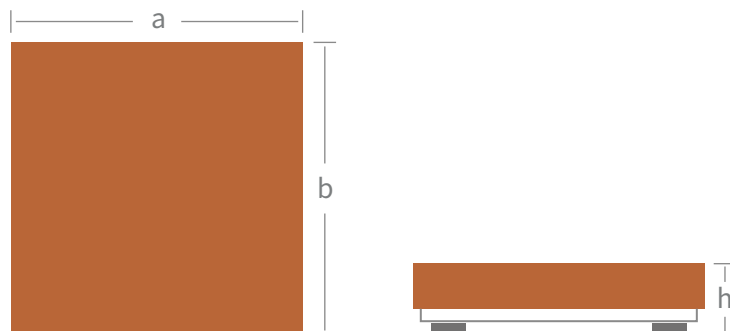
Model	Part No.	Size	Capacity	L.C.Cert	L.C.IP
BXT3006	620146	300x300mm	6kg	OIML	IP67
BXT3015	620147	300x300mm	15kg		
BXT3030	620148	300x300mm	30kg		
BXT4030	620149	400x400mm	30kg	CE	
BXT4060	620150	400x400mm	60kg		
BXT4150	620151	400x400mm	150kg		
BXT6060	620152	600x600mm	60kg	OIML	IP68 & IP69K
BXT6150	620153	600x600mm	150kg		
BXT6300	620154	600x600mm	300kg		
BXT3006K	620155	300x300mm	6kg	CE	
BXT3015K	620156	300x300mm	15kg		
BXT3030K	620157	300x300mm	30kg		
BXT4030K	620158	400x400mm	30kg	OIML NTEP	
BXT4060K	620159	400x400mm	60kg		
BXT4150K	620160	400x400mm	150kg		
BXT6060K	620161	600x600mm	60kg		
BXT6150K	620162	600x600mm	150kg		
BXT6300K	620163	600x600mm	300kg		

FEATURES

- Capacity up to 300kg
- Washdown design, OIML NTEP IP68 & IP69K load cell
(Easy and safe to clean with water)
- Four anti-slip S.S. adjusting feet
- Silicon buffer pan supports
- Overload protection
- Provide customized platform size
- Perfectly meet the weighing needs of the food, pharmaceutical and other industries.

DIMENSION / mm

Model	a	b	h-min	h-max	pack size	G.W/kg	1PC/CTN
BHB2	250	250	115	125	695*415*160	8.5	1
BHB3	300	300	115	125	795*415*160	11.5	1
BHB4	400	400	115	125	895*515*160	15.5	1



OPTIONAL

Accessories	Part No.	Details
BP5	109032	S.S. rectangular pole
BP8	109033	S.S. base and pole (Diameter 38mm)



BP5



BP8