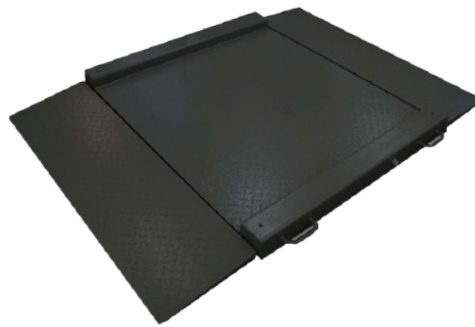


## SPECIFICATIONS

Material	Carbon steel
Capacity	1500/3000 kg
Load Cell	M28/M28M
Load Cell Approval	CE/OIML/NTEP
Load Cell Protection	IP67
Platform Size	1200x1200mm 1500x1500mm

## FEATURES

- Low profile platform with 5mm checked plate
- Plastic powder coating for long-term use
- 300 mm double ramps
- Capacity up to 1500/3000kg
- Comes with handles for easy movement
- 4 IP67 alloy steel shear beam load cells



## MODELS

Model	Part No.	Size	Capacity	L.C. Cert	L.C.IP
FDL1215	621141	1200x1200mm	1500kg	CE	IP67
FDL1230	621142		3000kg		
FDL1215M	621143		1500kg	OIML NTEP	
FDL1230M	621144		3000kg		
FDL1515	621145	1500x1500mm	1500kg	CE	
FDL1530	621146		3000kg		
FDL1515M	621147		1500kg	OIML NTEP	
FDL1530M	621148		3000kg		

## DIMENSION / mm

Model	size	pack size	G.W/kg	1PC/CTN
FDL1212	1200x1200x98	1220*1020*120	138	1
FDL1515	1500x1500x98	1720*1520*120	220	1

## OPTIONAL

Accessories	Part No.
ISA	692001

