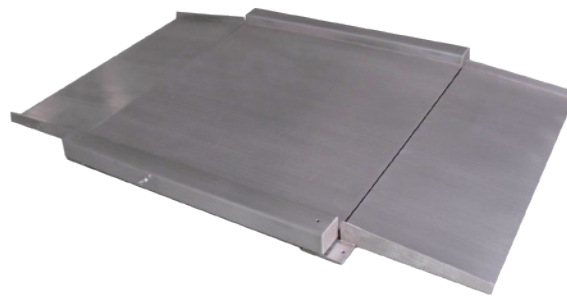


SPECIFICATIONS

Material	SUS304 stainless steel
Capacity	1500/3000 kg
Load Cell	M28B/M28i/M28S
Load Cell Approval	CE/OIML/NTEP
Load Cell Protection	IP67
Platform Size	1200x1200mm 1500x1500mm

FEATURES

- Low profile SUS304 S.S. platform with 4mm smooth plate (Optional 5/6 mm smooth plate)
- 300 mm double ramps
- Capacity up to 1500/3000kg
- 4 IP67 stainless steel shear beam load cells



MODELS

Model	Part No.	Size	Capacity	L.C. Cert	L.C.IP
FDLS1215	621213	1200x1200mm	1500kg	CE	IP67
FDLS1230	621214		3000kg		
FDLS1215M	621215		1500kg	OIML NTEP	
FDLS1230M	621216		3000kg		
FDLS1515	621217	1500x1500mm	1500kg	CE	
FDLS1530	621218		3000kg		
FDLS1515M	621219		1500kg	OIML NTEP	
FDLS1530M	621220		3000kg		

DIMENSION / mm

Model	size	pack size	G.W/kg	1PC/CTN
FDLS1212	1200x1200x98	1220*1220*100	88	1
FDLS1515	1500x1500x98	1530*1530*100	120	1

OPTIONAL

Accessories	Part No.
ISB	692004
ISC	692005
RFS	692006

