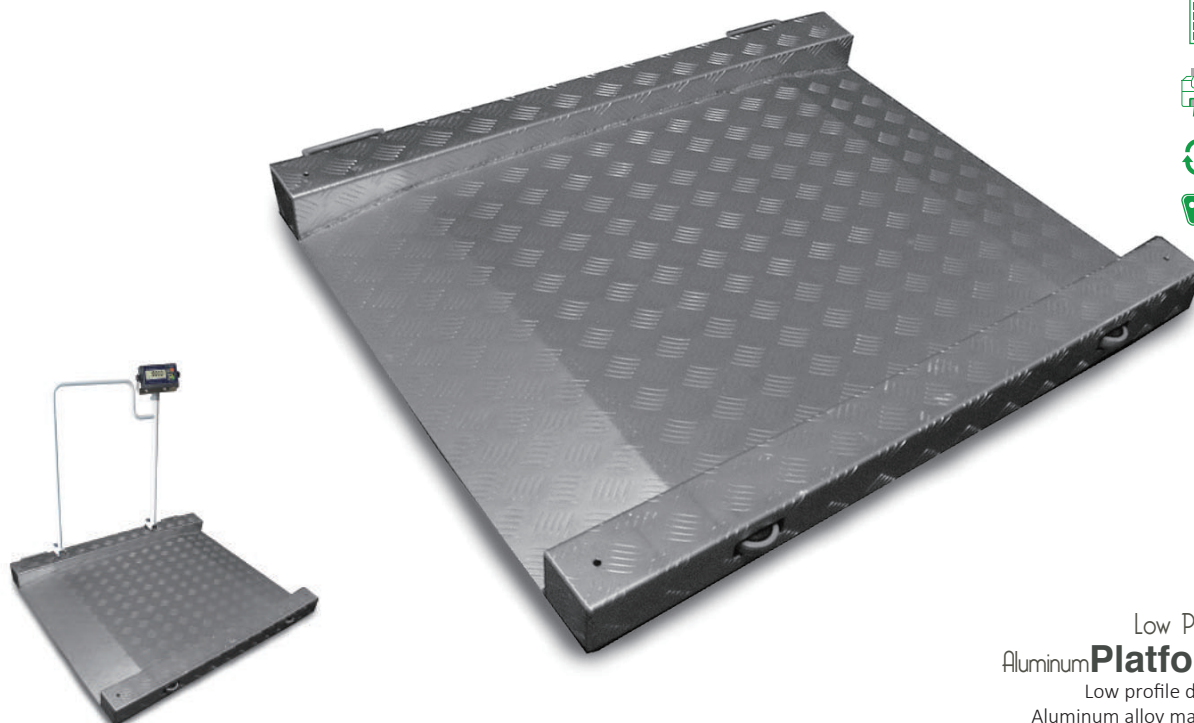
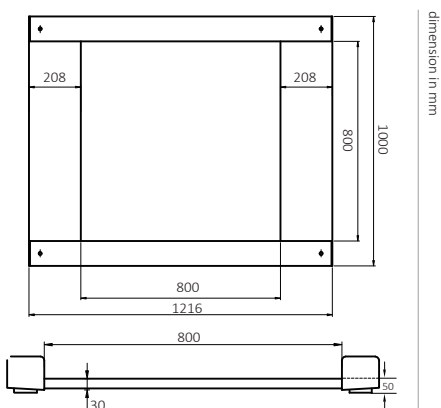


# FM WHEELCHAIR SCALE



Low Profile  
**Aluminum Platform**  
Low profile design  
Aluminum alloy material  
800\*800mm weighing zone  
Checked plate, no worry of slip  
OIML approved M28 load cells  
Interior ramp for each side  
Capacity up to 500kg  
Accuracy up to 100g



## Technical Data

### Power

AC/DC Adaptor: 100-240V 50/60Hz  
FM - X2-BMI:  
Rechargeable Battery: 6V1.2Ah  
Estimated Battery Life: 24 hours  
FMM - X3AM:  
Rechargeable Battery: 6V2.8Ah  
Estimated Battery Life: 30 hours

### Display

LCD with backlight

### Units

Kg | lb

### Operating Temperature

0°C - 40°C

### Approval

FM - CE  
FMM - CE/OIML

### Max. Capacity

500kg

### Accuracy

FM - 100g  
FMM - 200g

### Packing Dimensions

113\*124\*12cm

### Packing Weight

32kg

**X2-BMI Indicator**  
ABS housing  
Stainless steel bracket  
LCD display with backlight  
BMI check function  
Hold function  
Kg/lb units exchange  
G value (gravity) adjusting  
Optional RS232 interface  
Optional Bluetooth output



**X3AM Indicator**  
ABS housing  
OIML approved  
Stainless steel bracket  
LCD display with backlight  
Zero/Tare function  
Kg/lb units exchange  
Default with RS232 interface  
Optional Bluetooth output



## Models

Part No.	101012	101013
Models	FM	FMM
<b>U.P.(USD)</b>	<b>\$2,040.00</b>	<b>\$2,260.00</b>
Capacity	500kg	500kg
Division	100g	200g
Pack Size	113 x 124 x 12cm	113 x 124 x 12cm
Weight	32kg	32kg