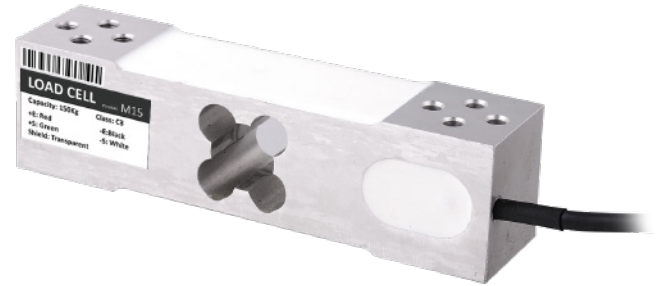


SPECIFICATIONS

Capacity 50-300kg	Sensitivity 2.0±0.2mV/V	Creep (30 Min) 0.02% F.S.	Input Resistance 406±6Ω
Material Aluminum alloy	Overload Limitation 150% F.S.	Zero Output ±2% Emax	Recommended Excitation 5-12VDC
Protection IP65	Output Resistance 350±3Ω	Temperature Effect Zero 0.14% F.S. / 10°C	Operating Temperature -35-65°C
Accuracy C3	Insulation Resistance ≥5000mΩ (50V)	Temperature Effect Sensitivity 0.017% F.S. / 10°C	

FEATURES

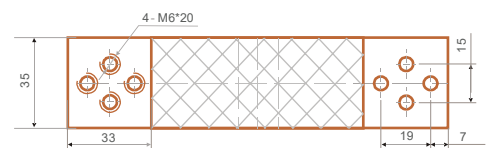
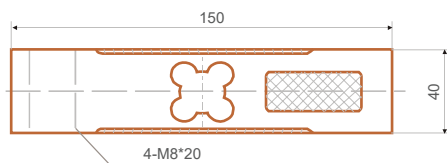
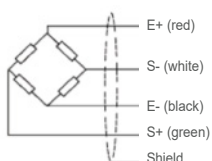
- M15-CE
- M15M-OIML
- Capacity up to 300kg
- Aluminum alloy material
- Default cable length is 2m, diameter is 3.9mm
(Optional customized longer cable)
- Recommended platform: from 300*300mm to 400*500mm
- Interchangeable with below models: Zemic* L6E



MODELS

Part No.	120029	120030	120031	120032	120033
M15	50kg	100kg	150kg	200kg	300kg
Part No.	120034	120035	120036	120037	120038
M15M	50kg	100kg	150kg	200kg	300kg
Class	C3				
IP	IP65				

DIMENSION / mm



Weight: 0.5kg - M15
0.6kg - M15M