

M15F M15FM

Single Point Load Cell

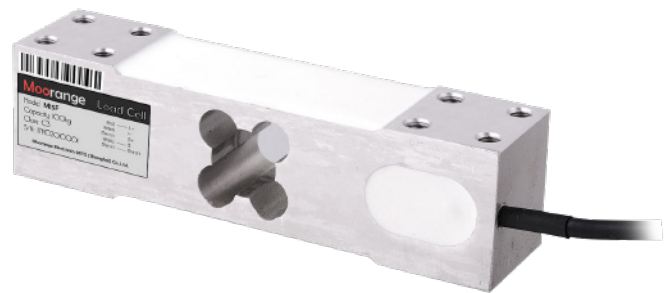


SPECIFICATIONS

Capacity 100-400kg	Sensitivity $2.0 \pm 0.2 \text{ mV/V}$	Creep (30 Min) 0.02% F.S.	Input Resistance $406 \pm 6 \Omega$
Material Aluminum alloy	Overload Limitation 150% F.S.	Zero Output $\pm 2\% E_{\text{max}}$	Recommended Excitation 5-12VDC
Protection IP65	Output Resistance $350 \pm 3 \Omega$	Temperature Effect Zero 0.14% F.S. / 10°C	Operating Temperature -35 - 65°C
Accuracy C3	Insulation Resistance $\geq 5000 \text{ m}\Omega$ (50V)	Temperature Effect Sensitivity 0.017% F.S. / 10°C	

FEATURES

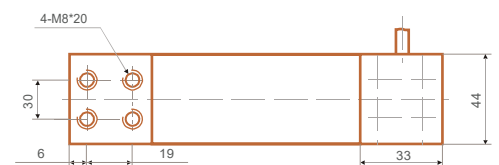
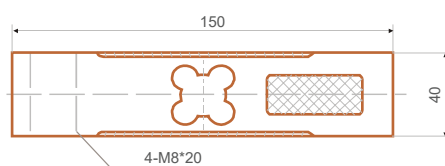
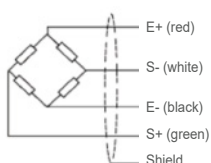
- M15F-CE
- M15FM-OIML
- Capacity up to 400kg
- Aluminum alloy material
- Default cable length is 2m, diameter is 3.9mm
(Optional customized longer cable)
- Recommended platform: from $300 \times 300 \text{ mm}$ to $400 \times 500 \text{ mm}$
- Interchangeable with below models: Zemic* L6E3



MODELS

Part No.	120039	120040	120041	120042
M15F	100kg	200kg	300kg	400kg
Part No.	120043	120044	120045	120046
M15FM	100kg	200kg	300kg	400kg
Class	C3			
IP	IP65			

DIMENSION / mm



Weight: 0.7kg - M15F
0.7kg - M15FM