

# M17 M17M

## Single Point Load Cell

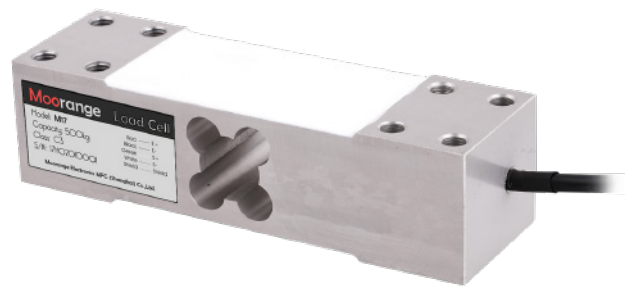
Moorrange

### SPECIFICATIONS

Capacity 50-750kg	Sensitivity 2.0±0.2mV/V	Creep (10 Min) 0.015% F.S.	Input Resistance 409±6Ω
Material Aluminum alloy	Overload Limitation 150% F.S.	Zero Output ±3% Emax	Recommended Excitation 5-12VDC
Protection IP65	Output Resistance 350±3Ω	Temperature Effect Zero 0.14% F.S. / 10°C	Operating Temperature -35-65°C
Accuracy C3	Insulation Resistance ≥5000mΩ (50V)	Temperature Effect Sensitivity 0.017% F.S. / 10°C	

### FEATURES

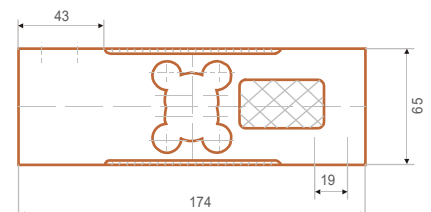
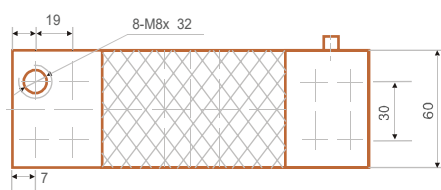
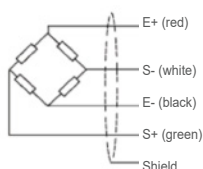
- M17-CE
- M17M-OIML/NTEP
- Capacity up to 250kg
- Aluminum alloy material
- Default cable length is 3m, diameter is 3.9mm  
(Optional customized longer cable)
- Recommended platform: from 400\*400mm to 800\*800mm
- Interchangeable with below models:  
TedeA-Huntleigh\* 1263, Zemic\* L6G, Celtron\* LOG ME



### MODELS

Part No.	120052	120053	120054	120055	120056	120057	120058
M17	50kg	100kg	200kg	300kg	500kg	600kg	750kg
Part No.	120059	120060	120061	120062	120063	120064	120065
M17M	50kg	100kg	200kg	300kg	500kg	600kg	750kg
Class	C3						
IP	IP65						

### DIMENSION / mm



Weight: 1.7kg