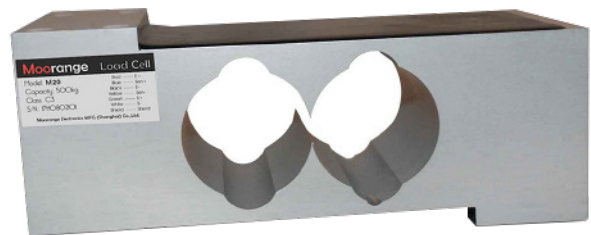


SPECIFICATIONS

Capacity 200-1000kg	Sensitivity 2.0±0.2mV/V	Creep (30 Min) 0.02% F.S.	Input Resistance 409±6Ω
Material Aluminum alloy	Overload Limitation 150% F.S.	Zero Output ±2% Emax	Recommended Excitation 5-12VDC
Protection IP65	Output Resistance 350±3Ω	Temperature Effect Zero 0.17% F.S. / 10°C	Operating Temperature -35-65°C
Accuracy C3	Insulation Resistance ≥5000mΩ (50V)	Temperature Effect Sensitivity 0.014% F.S. / 10°C	

FEATURES

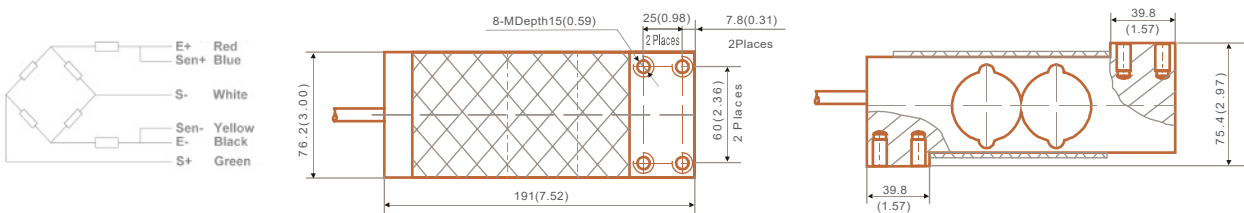
- M20-OIML/NTEP
- Capacity up to 1000kg
- Aluminum alloy material
- Default cable length is 3m, diameter is 5mm
(Optional customized longer cable)
- Recommended platform: from 600*600mm to 800*800mm
- Interchangeable with below models:
HMB* PW12C, TedeA-Huntleigh* 1252, Zemic* L6T



MODELS

Part No.	120081	120082	120083	120084	120085
M20	200kg	300kg	500kg	635kg	1000kg
Class	C3				
IP	IP65				

DIMENSION / mm(inch)



Weight: 2.1kg