



WIRELESS BOX **RBOX**

User Manual



v.201811

Value Each Gram

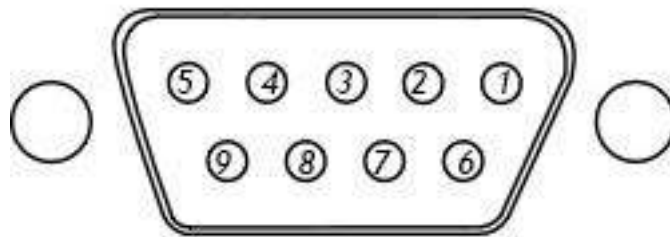
RBox User Manual

Rbox is a smart wireless solution for all RS232 devices, you can use it for connecting between weighing scales, indicators, computers, printers or other devices which with RS232 interface, to change the cable connecting by wireless!

1. Power Supply

- 1.1 9-12V Adapter (negative – center)
- 1.2 5V power directly to DB9 connector

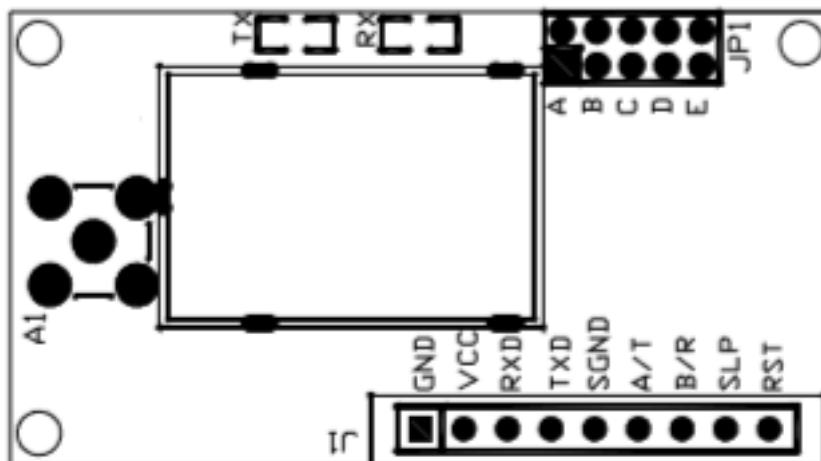
2. Connecting Pins



- Pin1 = 5V Power
- Pin2 = RX
- Pin3 = TX
- Pin5 = GND

The Rbox module has no definition for transmitter or receiver for each pair, if you use one as transmitter, another will be taken as receiver automatically, same configuration.

- 3. If you are using multi pairs of them in one field, please open the box and change the **ABC** jumper for each pair.
(7 channel available = **A, B, C, AB, AC, BC, ABC**)





v.201811

User Manual

RBOX



Weighing system & solution

An ISO9001 registered company
@No.335 Haishen, Xingxin Road, Huinan Town, Pudong District, Shanghai 201301, China
www.hiweigh.com All rights reserved, specifications subject to change without notice