



Load Bars

An ISO9001 registered company
Room 812, Building 3, Tiandu Tower, No. 211 Changjiang Road, Suzhou City, Jiangsu Province, China
www.hiweigh.com | info@hiweigh.com



Heavy Structure with Galvanised Finish

Double deck design, which can protect the inner part of the bars from soil, manure, etc., protect the load cells and maintain a high weighing accuracy for a long term. It's ideal to weigh under the platforms, alleyways, crates, crushes, etc.

The galvanized finish can give the best quality for long term durability in harsh environment, and top plate with another layer of plastic powder coating.

There are four fixing holes on the bottom plate, which can be installed temporarily or permanently.

ABH

Load Bars



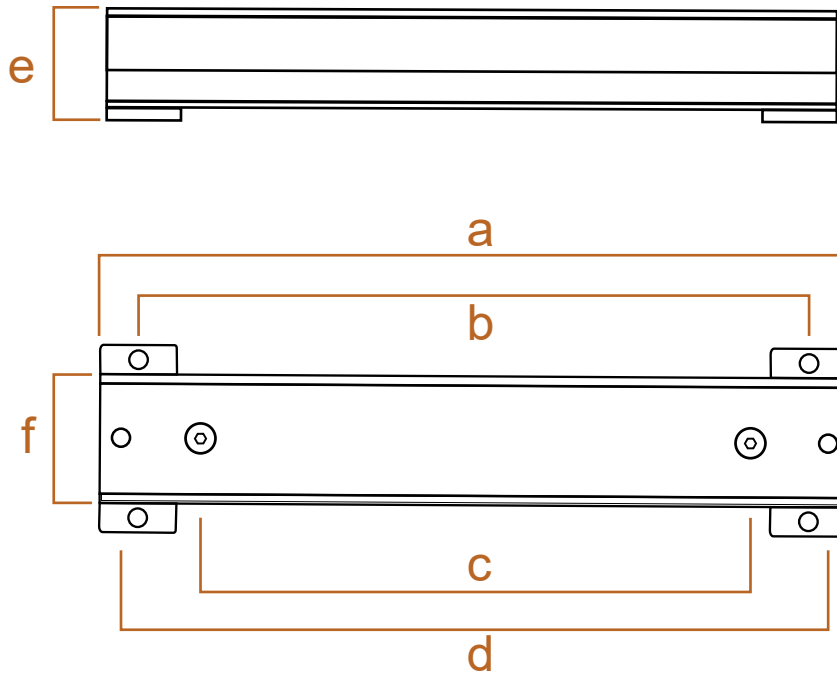
The internal load cells are made of alloy steel material with IP67 protection, for each bar, there is a 5m PUR/PVC cables with stainless steel spring protected, keep the cable from damage of rolling and rodent, etc.

It's compatible with our FOX indicators without calibration, and also it compatible with most other professional indicators (with load cell connectors Amphenol ordered, span calibration needed or customized pre-calibration).

Heavy Capacity up to 3,000kg | 6,600lb

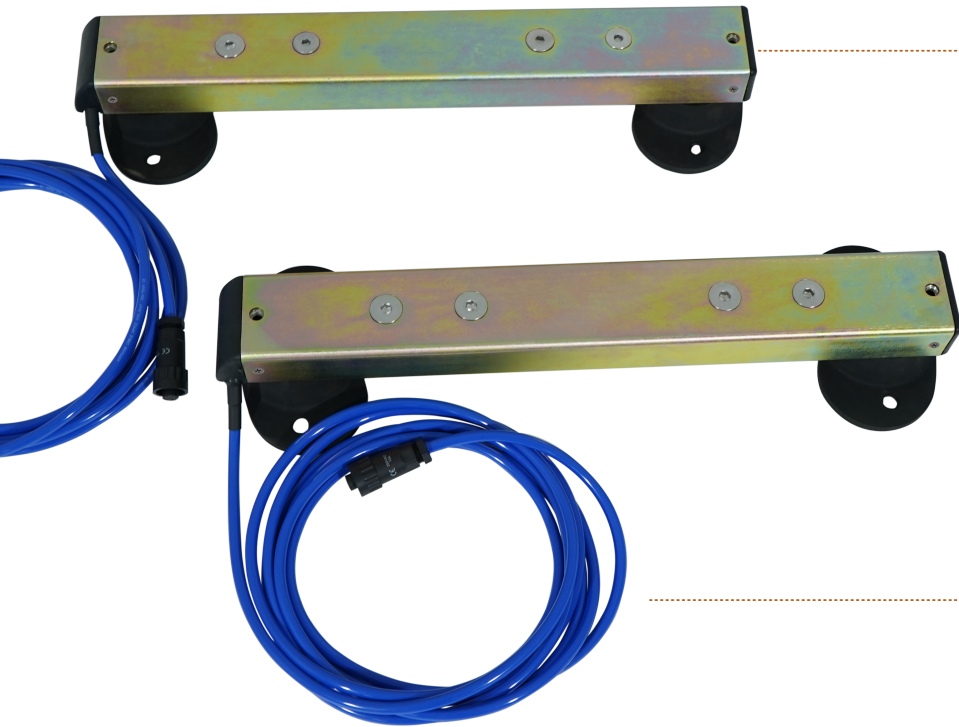
4 lengths for selection: 400mm, 600mm, 800mm or 1000mm, also customized length available.

5,000kg | 11,000lb model optional



Models	a	b	c	d	e	f
ABH400	400	340	242.4	368	90.3	100
ABH600	600	540	442.4	568	90.3	100
ABH800	800	740	642.4	768	90.3	100
ABH1000	1000	940	842.4	968	90.3	100

Part No.	170001	170002	170003	170004
Models	ABH400	ABH600	ABH800	ABH1000
Length	400mm 16"	600mm 24"	800mm 32"	1000mm 39"
Capacity	3000kg 6600lb			
Resolution	0.5kg 1lb			
Platform Fixing Centers	368mm	568mm	768mm	968mm
Bar Width	100mm 3.9"			
Height	90mm 3.5"			
Weight	20kg	23kg	26kg	32kg
Cable Length	5m			
Cable Type	4-wire PVC+PUR cable with stainless steel spring cover, protection from sunlight, oil, cold, rolling and rodents			
Load Cell Type	Alloy steel shear beam			
Accuracy	+/-1%F.S. or 2d			
Operating Temperature	-10 to +40 °C			
Selection Guide	Under a platform Alleyway Crate Woolpress			Squeeze chute Cattle crush



Rugged with Galvanised Finish

Tubular sealed housing, makes the load bars fully protected from rain, soil, manure, etc. A unibody design, light and easily to move between different weighing sites.

The galvanized finish can gives the best quality for long term durability in harsh environment.

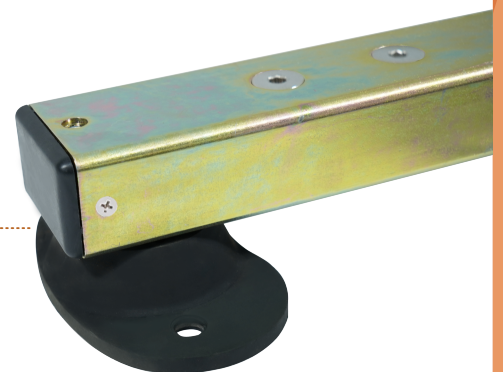
It's compatible with our FOX indicators without calibration, and also it compatible with most other professional indicators without calibration (for models list, please consult our dealers).

The internal load cells are made of aircraft grade aluminum material, and with IP66 protection, for each bar, there is a 5m PUR/PVC cables with stainless steel spring protected, keep the cable from damage of rolling and rodent, etc.

ABT

Load Bars

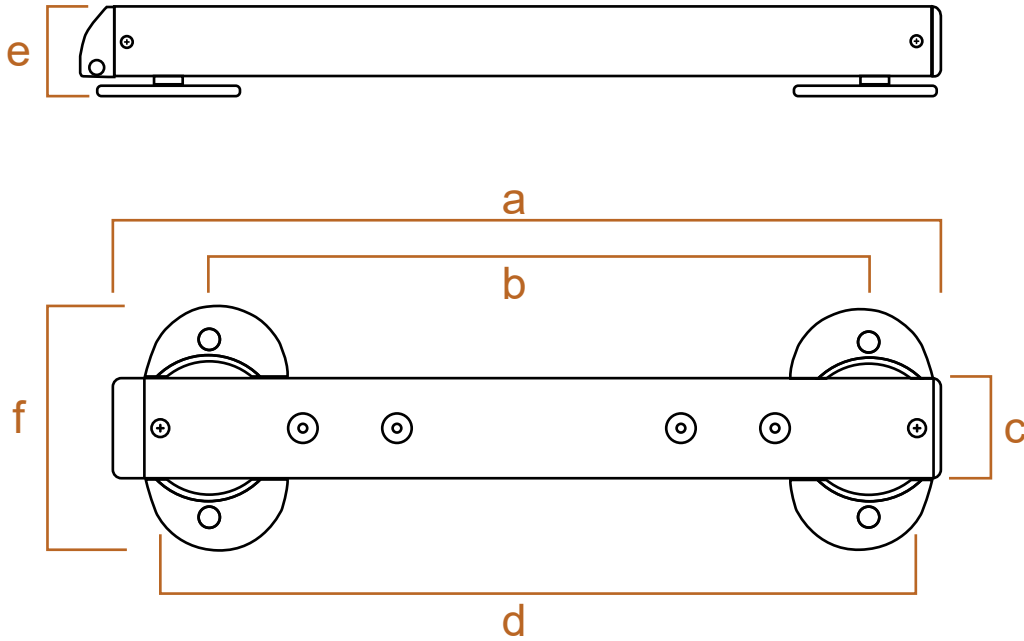
The fixing plate with rubber outside, absorbing some impact influence to weighing result, also it can be installed temporarily or permanently.



Heavy Capacity up to 3,000kg | 6,600lb

4 lengths for selection: 400mm, 600mm, 800mm or 1000mm, also customized length available.

5,000kg | 11,000lb model optional



Models	a	b	c	d	e	f
ABH400	400	305	80	390	90	105
ABH600	600	505	80	590	90	105
ABH800	800	705	80	790	90	105
ABH1010	1000	905	80	990	90	105

Part No.	170005	170006	170007	170008
Models	ABT400	ABT600	ABT800	ABT1010
Length	400mm 16"	600mm 24"	800mm 32"	1000mm 39"
Capacity	2000kg 4400lb		3000kg 6600lb	
Resolution	0.2kg 0.5lb		0.5kg 1lb	
Platform Fixing Centers	360mm	560mm	760mm	870-960mm
Bar Width	75mm 3"			
Height	90mm 3.5"			
Weight	10kg	16kg	20kg	24kg
Cable Length	5m			
Cable Type	4-wire PVC+PUR cable with stainless steel spring cover, protection from sunlight, oil, cold, rolling and rodents			
Load Cell Type	Aluminum alloy double shear beam			
Accuracy	+/-1%F.S. or 2d			
Operating Temperature	-10 to +40 °C			
Selection Guide	Under a platform Alleyway Crate Woolpress			Squeeze chute Cattle crush