



CRANE SCALE CSD
User Manual

CHAPTER 6 DISPLAY ILLUSTRATION

| DISPLAY | ILLUSTRATION | REMARK |
|------------|---------------------------------|---|
| [no519] | Without wiresee signal | Distance too far. |
| [SEtUP] | Enter parameter setting | |
| [UAdJ]] | Enter voltage calibration | |
| [LoAd] | Calibration point | |
| [-----] | Exceed high limit | Tare weight can't exceed full capacity |
| [_____] | Exceed low limit | Tare weight can't be negative |
| [-----] | Waiting | |
| [Err10] | Weight less than Min. Capacity | Can't accumulate the value |
| [Err11] | Accumulated times overflow | Can't accumulate after 30times |
| [Err12] | Accumulated weight overflow | Can't accumulate after 99999 |
| [Err13] | Error in repeat accumulation | Can't accumulate one weight repeatedly |
| [no***] | Current accumulation times | |
| [H****] | Front four digit of accumulated | Total weight=front four digit + rare four digit |
| [L****] | Rare four digit of accumulated | Total weight=front four digit + rare four digit |
| [CLr]] | Ask if you really want to | In case error deletion |
| [noCLr] | Give up deletion | |
| [88888] | Confirm deletion | |
| [---]] | Input value is too large | When you input tare or weight value |
| [_____]] | Input value is too small | When you input tare or weight value |
| [noACC] | No any accumulated content | when you check accumulation |
| [-oL0-]] | Overload warning | Tare + Net weight exceed full capacity + 9e |
| [-oL1-]] | Overload warning | Tare + Net weight exceed full capacity 125% |
| [-Lb-]] | Low battery warning | Turn off automatically one minute later |
| [U*.**] | The voltage of current | |
| [End]] | End | when parameter setting or calibration ready |
| [OFF]] | Turn off | |
| [Unstb] | Input value before STB light | |

TABLE OF CONTENTS

| | |
|--|----|
| SAFE OPERATION GUIDE | 2 |
| CHAPTER 1 FEATURES AND SPECIFICATION | 3 |
| 1.Features | 3 |
| 2.Main technical data | 3 |
| 3.Specification | 3 |
| 4.Appearance illustration | 4 |
| 5.Power supply | 4 |
| CHAPTER 2 DISPLAY AND KEY | 5 |
| 1. Led display | 5 |
| 2. Key area | 5 |
| CHAPTER 3 WIRELESS INDICATOR OPERATION GUIDE | 7 |
| CHAPTER 4 FUNCTION GUIDE | 8 |
| 1.Turn on/off.. | 8 |
| 2.Zero | 9 |
| 3.Tare | 9 |
| 4.Peak Hold | 9 |
| 5.Accumulation | 9 |
| 6.Accumulation Search | 9 |
| 7.Accumulation Clear | 9 |
| 8.Battery Voltage Check | 10 |
| 9.Unit Convert | 10 |
| CHAPTER 5 PARAMETER SETTING & CALIBRATION | 10 |
| 1. Parameter setting | 13 |
| CHAPTER 6 SIGNAL ILLUSTRATION | 14 |
| CHAPTER 7 TROUBLESHOOTING GUIDE | 15 |

| | | |
|---|---------|---|
| Press 【ENTER】 to confirm | 〔 SP1〕 | Set point 1 |
| Press 【ENTER】 to confirm | 〔1 OFF〕 | display 1 OFF, if it calibrated, the screen display calibrated value. |
| Press 【ZERO】 to choose | 〔1 LO〕 | Choose Set point 1 mode: “1 OFF” means set point 1 no function, “1 LO” is Set point 1 lower, “1 HI” is Set point 1 High |
| Press 【ENTER】 to confirm | 〔02000〕 | display 02000, if it calibrated, the screen display calibrated value. |
| Press 【ZERO】 to set value, Press 【TARE】 to move digit | 〔02000〕 | Set “1 LO” or “1 HI” Value. |
| Press 【ENTER】 to confirm | 〔 SP2〕 | Set point 2 |
| Press 【ENTER】 to confirm | 〔2 OFF〕 | display 2 OFF, if it calibrated, the screen display calibrated value. |
| Press 【ZERO】 to choose | 〔2 LO〕 | Choose Set point 2 mode: “2 OFF” means set point 2 no function, “2 LO” is Set point 1 low value, “2 HI” is Set point 2 |
| Press 【TARE】 to confirm | 〔02000〕 | display 02000, if it calibrated, the screen display calibrated value. |
| Press 【ZERO】 to set value, Press 【TARE】 to move digit | 〔02000〕 | Set “2 LO” or “2 HI” Value. |

CHAPTER1

FEATURES AND SPECIFICATION

Profile:

CSD wireless load gauge is an extremely well-built instrument for industry use ,as a standard wireless tool offer universal applications, Whether used as conventional crane weigher or to measure force, CSD wireless load gauge is microprocessor controlled for precision accuracy, calibration is easier with wireless indicator.

1. Standard Features:

- ◆ Rugged construction.
- ◆ Accuracy: 0.1% of capacity
- ◆ All fuctions and units are clearly display on the LCD (with backlighting),
- ◆ Digits are 1 inch high for easy distant viewing.
- ◆ Two user programmable Set-Point can be used for safety and warning applications or for limit weighing.
- ◆ Long battery life on 3 standard “LR6(AA)”size alkaline batteries.
- ◆ All commonly used internationally recognized units are available:kilograms(kg), short Tons(t) pounds(lb), Newton and kilonewton(kN)
- ◆ Infrared Remote control easier to calibration(with password)
- ◆ Infrared Remote control with many fuctions: “ZERO”, ”TARE”,”CLEAR”,“PEAK”,“ACCUMULATE”, ”HOLD”,”Unit Change”,”Voltage Check” and “Power OFF”
- ◆ 4 local mechanical keys: ”ON/OFF”,”ZERO”,”PEAK” and ”Unit Change”.
- ◆ low battery warnning.
- ◆ RF wireless palm indicator

CHAPTER 5

PARAMETER SETTING & CALIBRATION.

You can use wireless indicator to operate parameter setting and cabibration

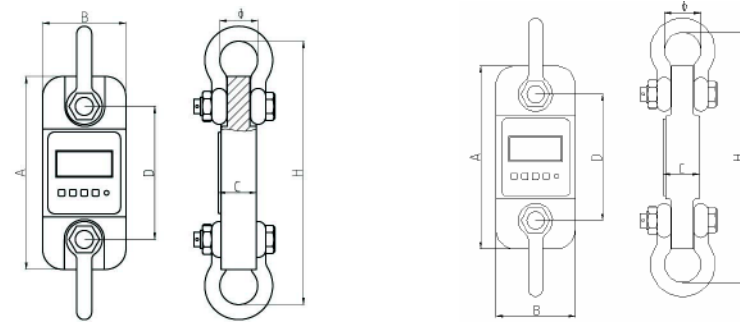
1.Key function:

| KEY | FUNCTION |
|---------|------------------|
| 【TARE】 | Move digits |
| 【ZERO】 | Set value up |
| 【MODE】 | Storage and exit |
| 【ENTER】 | Confirm |

2. PARAMETER SETTING

| OPERATION | DISPLAY | ILLUSTRATION |
|-------------------------|---------|--|
| Press 【MODE】 key twice | 〔SETUP〕 | Confirm, enter parameter setting program |
| Pres 【ENTER】 | 〔FS=06〕 | display FS=06 , if it calibrated, the screen display capacity. |
| Press 【ZERO】 to choose | 〔FS=02〕 | Choose capacity ,the screen display 02/03/05/06/10/15/20/30/50/60/75 circularly , take cap:2000kg as example, choose FS=02 |
| Press【ENTER】 to confirm | 〔Id=02〕 | display Id=02, if it calibrated,the screen display calibrated division. |
| Press 【ZERO】 to choose | 〔Id=01〕 | Choose division,the screendisplay 01/02/05/10/20circularly. 2000kg the division is 1kg, so choose Id=01 |
| | 〔Pt=0〕 | display Pt=0, if it calibrated ,the screen display calibrated decimal position |
| Press 【ZERO】 to choose | 〔Pt=0〕 | Choose decimal position, the screen display 0/1/2/3 circularly, 0=xxxxx, 1=xxxx.x, 2=xxx.xx, 3=xx.xxx , Cap.2000kg choose Pt=0 |

4.Appearance illustration



Cap: 1-5 t

Cap: 10-200 t

| CAPACITY | A(mm) | B(mm) | C(mm) | D(mm) | Ø(mm) | H(mm) | MATERIAL |
|----------|-------|-------|-------|-------|-------|-------|-----------|
| 1000kg | 245 | 112 | 37 | 190 | 43 | 335 | Aluminium |
| 2000kg | 245 | 116 | 37 | 190 | 43 | 335 | Aluminium |
| 3000kg | 260 | 123 | 37 | 195 | 51 | 365 | Aluminium |
| 5000kg | 285 | 123 | 57 | 210 | 58 | 405 | Aluminium |
| 10000kg | 320 | 120 | 57 | 230 | 92 | 535 | Steel |
| 15000kg | 375 | 128 | 74 | 260 | 127 | 660 | Steel |
| 20000kg | 375 | 128 | 74 | 260 | 127 | 660 | Steel |
| 30000kg | 420 | 138 | 82 | 280 | 146 | 740 | Steel |
| 50000kg | 465 | 150 | 104 | 305 | 184 | 930 | Steel |
| 100000kg | 570 | 190 | 132 | 360 | 229 | 1230 | Steel |
| 200000kg | 725 | 265 | 183 | 440 | 280 | 1380 | Steel |

5. Power supply

Battery: “LR6(AA)”size alkaline batteries. 1.5Vx3

Current: the CSD load guage average current is about DC 35mA, 3pcs new batteries can be used for about 40hours.wireless indicator average current is about DC 28mA, 4pcs new batteries can be used for about 80hours

Low battery warning: When the digits flashes, it means the battery needs to be replaced. The CSD load guage or wireless indicator will power off automatically after half hours operation.

4. PEAK HOLD

| OPERATION | ILLUSTRATION |
|------------------------------|-------------------------------|
| Press (PEAK) or 【PEAK】 | Display Maximum value |
| Press (PEAK) or 【PEAK】 again | reading will resume changing. |

5. ACCUMULATION

| OPERATION | DISPLAY | ILLUSTRATION |
|--------------------------|---------|----------------------------------|
| Press 【MODE】 key 5 times | 〔No***〕 | Current accumulation time |
| Then Press 【ENTER】 Key | 〔H****〕 | Front four digits of total value |
| | 〔L****〕 | Rear four digits of total value |

After display above contents twice, the CSD will return automatically.

6 · ACCUMULATION SEARCH

| OPERATION | DISPLAY | ILLUSTRATION |
|--------------------------|----------|----------------------------------|
| Press 【MODE】 key 6 times | 〔No.***〕 | Current accumulation time |
| Then Press 【ENTER】 Key | 〔*****〕 | Current weight reading |
| | 〔H****〕 | Front four digits of total value |
| | 〔L****〕 | Rear four digits of total value |
| Press 【MODE】 key again | | Return |

Press 【TARE】 and 【ZERO】 can check different times weight and accumulation.

7. ACCUMULATION CLEAR

| OPERATION | DISPLAY | ILLUSTRATION |
|--------------------------|--------------|---------------------------------|
| Press 【MODE】 key 7 times | 〔 CLr 〕 | Ask if you want to clear or not |
| Then Press 【ENTER】 Key | 〔noClr〕 | Press 【MODE】 key Cancel clear |
| | 〔8.8.8.8.8.〕 | Press 【ENTER】 key Confirm clear |

b. ZERO:

When CSD load gauge switch on with no load on the hook, but there are small digits on screen, press this key to obtain the zero reading.

c. UNIT:

Press UNIT key, the unit on LCD will circledly sequence change: “kg” → “t” → “lb” → “klb” → “N” → “kN” → “kg” .

d. PEAK:

- ① · When weight is changing , press this key will display the maximum reading.
- ② · Press this key again , reading will resume changing.

CHAPTER 3

WIRELESS INDICATOR OPERATION GUIDE



① 【ZERO】

a. In testing status , there are small digits on screen, press this key to obtain the zero reading.

b. In Parameter Setting status , it Used as scrolling up.

② 【TARE】

a. Hang sling or container on the hook, when the reading stable, press this key, the digits display “0”, and “N” indicator Flash.

b · Put the goods into container, the CSD will display goods net weight.

c · If move goods and container, the CSD will display minus value of tare weight.

d. In Parameter Setting status , it Used as digits movement .

RS232 PROTOCOL

Port : COM1
 Baud Rate: 4800
 Data Bits : 8
 Stop Bits : 1
 Parity : None

ASCII Code and Binary hybrid transmission

| = | FLAG (1Byte) | | | | | | | | Unit (1Byte) | Sign and Decimal (1Byte) |
|---|--------------|--------------|----------|----------|----------|--------------|----------|----|-----------------|-----------------------------|
| | F1 | F2 | F3 | F4 | F5 | F6 | F7 | F8 | | |
| p | S | O | T | H | P | B | SP | | 0x30: kg | (+ and -) sign: |
| r | T | V | A | O | E | E | A | | 0x31: Lb | High 4 bits |
| e | A | E | R | L | A | T | L | | 0x32: N | Decimal: |
| a | BL | R | E | D | K | T | A | | 0x33: kN | Low 4 bits |
| m | E | L | | | | E | R | | 0x34: t | |
| b | | O | | | | R | M | | | |
| l | | A | | | | Y | | | | |
| e | | D | | | | | | | | |
| = | 0: no | 0: n o | 0: no | 0: no | 0: no | 0: L O | 0: no | | | 0:POSITIVE 1:NEGATIVE |
| | 1: Y | 1: Y | 1: Y | 1: Y | 1: Y | W | 1: Y | | | 0:No Decimal 1:1 Decimal |
| | E | Y | E | E | E | | E | | | 2:2 Decimal |
| | S | E | S | S | S | | S | | | 3:3 Decimal |

| TTTTT | , | NNNNN/PPPPP | |
|----------------------------------|-----------------|----------------------------------|--|
| 5Byte | 1Byte | 5Byte | |
| Tare value | Separate symble | Net value and Peak value | |
| 0x30~0x39 Overload: 3SP+OL | | 0x30~0x39 Overload: 3SP+OL | |

Example:

67.8kg: (F1 F2 F3 F4 F5 F6 F7 F8)30 01 30 30 36 37 38, 30 30 36 37 38

-68.1lb: (F1 F2 F3 F4 F5 F6 F7 F8)31 F1 30 30 36 37 38, 30 30 36 37 38

6.78kg: (F1 F2 F3 F4 F5 F6 F7 F8) 30 02 30 30 36 37 38, 30 30 36 37 38

CHAPTER 7 TROUBLESHOOTING GUIDE

| PROBLEM | POSSIBLE CAUSE | SOUTION |
|--|---------------------------------------|--|
| No display | Defective battery | Replace |
| | Defective button | Requires authorized |
| | Power button not properly depressed | Press ON/OFF key firmly in three seconds |
| Digits flash | Low battery | Change new battery |
| Display doesn't respond to load changes | Faulty loadcell or PCB | Requires authorized |
| | Out of calibration | Re- calibration |
| Display experiences excessive Zero drift between weighment | CSD do not stabilize after turning on | After turning on, heating 3-5 minutes. |
| Displayed weight shows large error | CSD not Zeroed before applying weight | Depress ZERO before applying weight |
| | Requires recalibration | See calibration |
| | Kg/lb wrong selescion | See operation |
| Wireless distance shortened | Wireless indicator's battery is low | Replace battery. |

NOTE: If you turn off the CSD ,immediately turn on it , sometime it will disply [-oL1-] though it without any hanging. Just turn off CSD and waiting few minutes then turn on again.

SAFE OPERATION GUIDE :

1. Do not overload this CSD load guage.
2. Do not perform overhead weighing. Stay clear when CSD load guage is in operation
3. Do not perform weighing under strong wind condition which may cause incorrect reading
4. Do not perform weighing under enviorment of temperature rapid changes in which may cause incorrect reading
5. Do not attempt to open this CSD load guage, no user serviceable parts inside.
6. Do not remove wire rope stopper from hook. For safety reasons, always apply it.
7. Remove all loads from shackle or hook when not in used.
8. Before weighing, check and make sure that all hanging /load- receiving elements / devices are in good condition.
9. Check hook, shackle, safety pins, and latches periodically. Contact your dealer for parts replacement in case defect, deform or wearing is found.
10. Always lift loads vERically.

| | | |
|------------------------------|----------|---|
| Press 【ENTER】 key to confirm | 〔 g= 〕 | acceleration of gravity |
| Press 【ENTER】 key to confirm | 〔 9.82 〕 | New CSD , the screen display 9.7930, if CSD be calibrated , the screen display calibrated area value.user can change it to local value,press 【 MODE 】 key to shift digit, Press 【 ENTER 】 key to change value. The limited value is 9.783-9.832 |
| Press 【MODE】 key | 〔 End 〕 | Confirm above parameter setting , Exit parameter setting program. |

3. calibration

| OPERATION | DISPLAY | ILLUSTRATION |
|---------------------------------|------------|---|
| To confirm | 〔 0 〕 | Take Cap:1000kg CSD as example ,pay attention that the screen display 〔 0 〕 after hanging tare weight, you can hang tare weight at first, then turn |
| Press 【MODE】 key 8times, | 〔 CLibr 〕 | Access calibration Status |
| Press 【ENTER】 key | 〔 CAL 1 〕 | One point calibration |
| Press 【ENTER】 key | 〔 CALSP 〕 | Zero point calibration |
| Press 【ENTER】 key | 〔 LoAd 〕 | Hanging standard weight 2000kg Waiting until STB signal on screen |
| Press 【ENTER】 key | 〔 01000 〕 | Display capacity you choose when parameter setting , and first digit flash , Do wait until “STB” signal display on screen. |
| Press 【MODE】 key to storage | 〔 ----- 〕 | Confirm |
| | 〔 -oL- 〕 | |
| | 〔 End 〕 | |
| | 〔 1000.0 〕 | |
| Press 【TARE】 key to Shift digit | 〔 1000 〕 | Calibration end |

2. Main technical data

| | |
|---------------------|--|
| Display | 25mm (1") 5digits LCD |
| Power on zero range | 20% F.S. |
| Manual Zero Range | 4% F.S. |
| Tare Range | 20% F.S. |
| Stable Time | ≤10 seconds |
| Overload Indication | 100% F.S. + 9e |
| Max. Safety Load | 125% F.S. |
| Ultimate Load | 400% F.S. |
| Battery Life | ≥50 hours |
| Battery Type | "LR6(AA)"size alkaline batteries. 1.5Vx3 |
| Operating Temp. | - 10°C ~ + 40°C |
| Operating Humidity | ≤85% RH under 20°C |
| Wireless Distance | Min. 80m(default) [200m(optional)] |
| Wireless Frequency | 2.4GHz(default),433MHz,860MHz(optional) |

3.Specification

| Model | Max.Capacity (kg/lb) | Min.Weigh (kg/lb) | Division (kg/lb) | Total display counts (n) |
|---------|-------------------------|----------------------|---------------------|-----------------------------|
| CSD-01 | 1000 /2200 | 10 /20 | 0.5 /1 | 2000 |
| CSD-02 | 2000 /4400 | 20/40 | 1 /2 | 2000 |
| CSD-03 | 3000 /6600 | 20/40 | 1 /2 | 3000 |
| CSD-05 | 5000 /11000 | 40/80 | 2/4 | 2500 |
| CSD-10 | 10000 /22000 | 100/200 | 5 /10 | 2000 |
| CSD-15 | 15000 /33000 | 100/200 | 5/10 | 3000 |
| CSD-20 | 20000 /44000 | 200 /400 | 10/20 | 2000 |
| CSD-30 | 30000/66000 | 200/400 | 10/20 | 3000 |
| CSD-50 | 50000/110000 | 400/800 | 20/40 | 2500 |
| CSD-100 | 100000/220000 | 1000/2000 | 50/100 | 2000 |
| CSD-200 | 200000/440000 | 20000/4000 | 100/200 | 2000 |

| | | |
|-------------------------|-----------|---|
| Press【ENTER】 to confirm | [[Ab=24]] | Display zero range , A:zero range by hand;B:zero range automatically, 0~5 total 6 options: 0=0%F.S; 1=2%F.S; 2=4%F.S; 3=10%F.S; 4=20%F.S; 5=50%F.S Generally Don't change |
| Press【ENTER】 to confirm | [[Cd=11]] | New CSD , the screen display Cd=11;if CSD calibrated, the screen display calibrated value. |
| Press 【ZERO】 to confirm | [[Cd=11]] | C: zero-tracking range, 0~5 total 6 options; 0=0d; 1=0.5d; 2=1d; 3=1.5d; 4=2d; 5=2.5d d: display speed, 0~2 total 3 options; 0=slow; 1=average; 2=fast; before calibration, set Cd=00,after calibration, set Cd=11 again, generally choose Cd==11 when ex-stock.. |
| Press【ENTER】 to confirm | [[LL=2]] | New CSD , the screen display LL=2, if CSD calibrated, the screen display calibrated value. |
| Press 【ZERO】 to choose | [[LL=2]] | LL: filter parameter, 0~5 total 6 options, from smallest to biggest , before calibration, set LL=0,after calibration, set LL=2 again, generally choose LL=2 when ex-stock.. |
| Press【ENTER】 to confirm | [[Un=0]] | New CSD , the screen display Un=0, if CSD calibrated the screen display calibrated unit |
| Press 【ZERO】 to choose | [[Un=0]] | Choose unit , Un=0 : kg, Un=1: lb, Un=2: N, Un=3: KN, Un=4: ton, Generally, choose Un=0 when ex-stock. |
| Press【ENTER】 to confirm | [[OFF 1]] | New CSD , the screen display OFF 1,if CSD calibrated ,the screen display calibrated value |
| Press 【ZERO】 to choose | [[OFF 2]] | Choose turn off method, 0~2 total 3 options; 0:turn off by hand; 1: if no operation, the screen display [[-]] after 15minutes to save power;2: if no operation, the screen display [[-]] after 15minutes, and turn off automatically after 60minutes. Generally,choose OFF=2 when ex-stock. |

CHAPTER 2 DISPLAY & KEY

1. LCD DISPLAY



- a. 25mm (1") 5digits LCD with all fuctions and units.
- b. **Signal** : Wireless signal, it Appear means signal stable, it disppear while signal miss. it flash means signal weak.
- c. **Battery Voltage**, **F** : Full, **L** : Low, **E** : Empty
- d. **PEAK**: Current value is Peak Hold value(maxmium value).
- e. **MEM**: Appear one time when Parameter or calibration value storage. long time appearance means current value is Accumulation data.
- f. **STB** : Stable Status.
- g. **kN** : "kilonewton", **N**: "Newton". Tare status "N" will flash.
- h. **t** : "ton".
- i. **lb** : "pound".
- j. **kg** : "kilogram".

2. Key Area

- a. **ON/OFF**: Power ON & Power OFF
 1. Press "ON/OFF" Key 3 Second, the CSD load guage turn ON.
 2. In ON status, Press "ON/OFF" Key 1 Second, the CSD load guage turn OFF.

8. BATTERY VOLTAGE

| OPERATION | DISPLAY | ILLUSTRATION |
|----------------------------------|----------------|---------------------------------|
| Press 【MODE】 key 3 times, | [[U *.* **]] | Display current battery voltage |
| Press 【MODE】 key again | | Return |

Note : Battery voltage normally between [[U 3.50]] to [[U 4.70]], if below [[U 3.10]] display will flash , Battery should be changed.

9. UNIT CONVER

| OPERATION | DISPLAY | ILLUSTRATION |
|--|--------------|--|
| Press 【MODE】 key select "Unit", press 【ENTER】 key. | [[Un =00]] | press 【ENTER】 key, Unit will be changed circulate |
| Press 【MODE】 key again | | Return |

10. Return to normal tecting status

| OPERATION | DISPLAY | ILLUSTRATION |
|---|-----------|---------------------------------|
| Press 【MODE】 key select "ESC", press 【ENTER】 key. | [[ESC]] | Return to normal testing status |

③ 【MODE】

Used as function select , or can be combined with other Keys.

④ 【ENTER】

- ◆ Used as function select , normally combined with 【MODE】 Key.
- ◆ Press 【MODE】 key once, display “OFF”, Press 【ENTER】 Key to realize remote power OFF °
- ◆ Press 【MODE】 key twice, display “SETUP”, Press 【ENTER】 Key access Parameter Setting status. Setting finish, press 【MODE】 key again storage data and back to test mode.
- ◆ Press 【MODE】 key 3 times, display “dC”, Press 【ENTER】 Key to inquire battery voltage, press 【MODE】 key again back to test mode.
- ◆ Press 【MODE】 key 4 times, display “Unit”, Press 【ENTER】 Key access unit selection. Press 【ZERO】 key to select unit, press 【MODE】 key again back to test mode.
- ◆ Press 【MODE】 key 5 times, display “ACCU”, Press 【ENTER】 Key access Accumulation Status, press 【MODE】 key again back to test mode.
- ◆ Press 【MODE】 key 6 times, display “SACCU”, Press 【ENTER】 Key access Accumulation Search Status, press 【MODE】 key again back to test mode.
- ◆ Press 【MODE】 key 7 times, display “cLEAr”, Press 【ENTER】 Key access Accumulation clear Status,, display “CLr”, Press 【ENTER】 Key again, display “noCLr”. press 【MODE】 key again back to test mode.
- ◆ Press 【MODE】 key 8 times, display “CLIBr”, Press 【ENTER】 Key 3 seconds, access calibration Status, if press 【ENTER】 key less than 3 seconds, it will back to test mode.
- ◆ Press 【MODE】 key 9 times, display “dFuLt”, Press 【ENTER】 Key and 【PEAK】 Key 3 seconds back to default setting.

⑤ 【PEAK】

- (1) · When weight is changing , press this key will display the maximum reading.
- (2) · Press this key again , reading will resume changing.

CHAPTER 4 CSD FUNCTION GUIDE.

Note: () meansthekeyonoverlay ,【 】 meansthekeyon wireless indicator

1. ON/OFF

- ◆ TURN ON Press (ON/OFF) 3seconds , display as below :

| OPERATION | DISPLAY | ILLUSTRATION |
|-----------|------------------|------------------------------------|
| ON/OFF | [[8.8.8.8.8.]] | Display twice |
| | [[ERT]] | Display twice |
| | [[1000.0]] | Display twice capacity |
| | [[U 6.XX]] | Display current battery voltage |
| | [[u 2.1]] | Display current software version |
| | [[-----]] | Waiting stable |
| | [[O]] | “STB”light on, you can operate now |

- ◆ TURN OFF

| | | |
|---|------------------|---|
| 1 | Manual Power OFF | Press (ON/OFF) Key 3Seconds |
| 2 | Remote Power OFF | Press 【MODE】 Key select “OFF”,press 【ENTER】 Key 3Seconds |
| 3 | Auto Power OFF | Choose turn off method when parameter setting, the CSD will display [[-]] after no operation at 15minutes to save power,and it will turn off automatically after 60minutes. |

2.ZERO

| | OPERATION | DISPLAY | When CSD turn on,generally displays [[0]] ,if display small digits when no load, press this key. |
|---|----------------|---------|--|
| 1 | Press (ZERO) | [[0]] | |
| 2 | Press 【ZERO】 | | |

3.TARE

| | OPERATION | DISPLAY | After turn on,hanging tare weightsuch as sling, cable at first, press this key, “TARE” light on,then the scale will display net weight of the goods. |
|---|--------------|---------|--|
| 1 | Press 【TARE】 | [[0]] | |